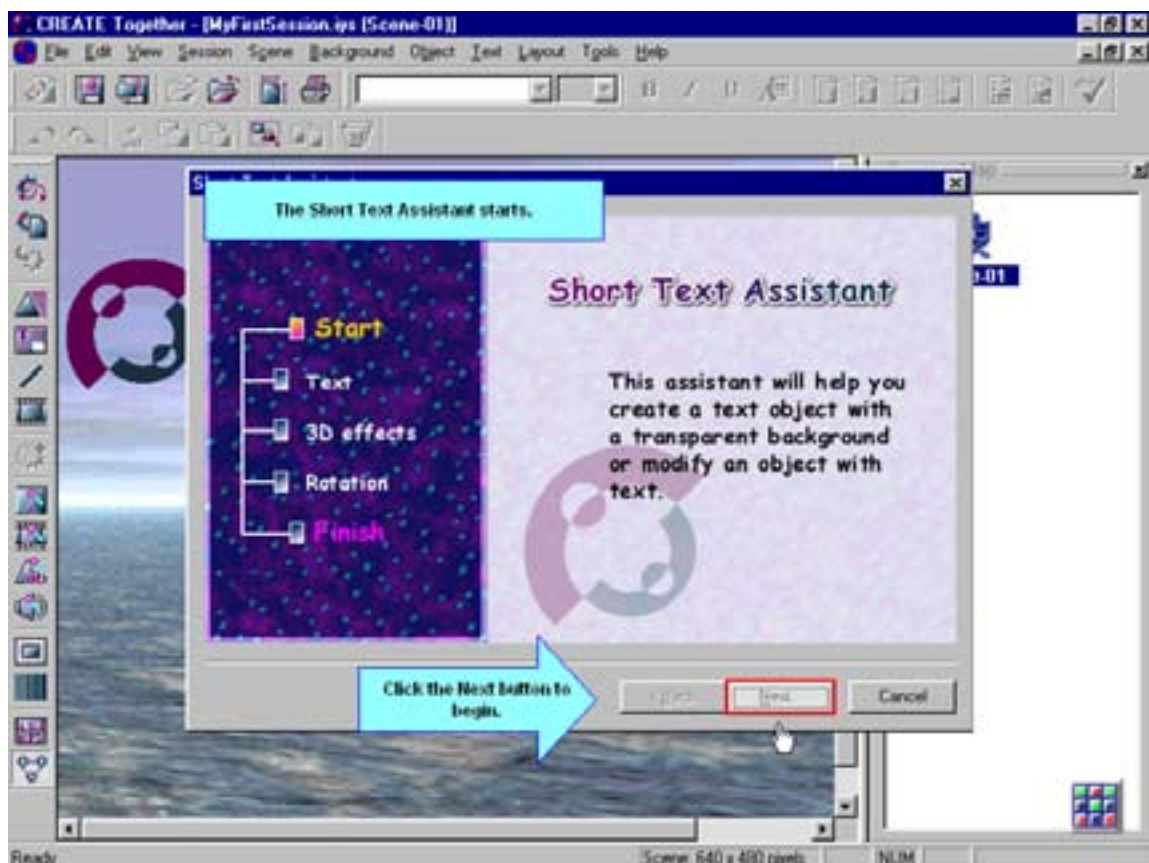
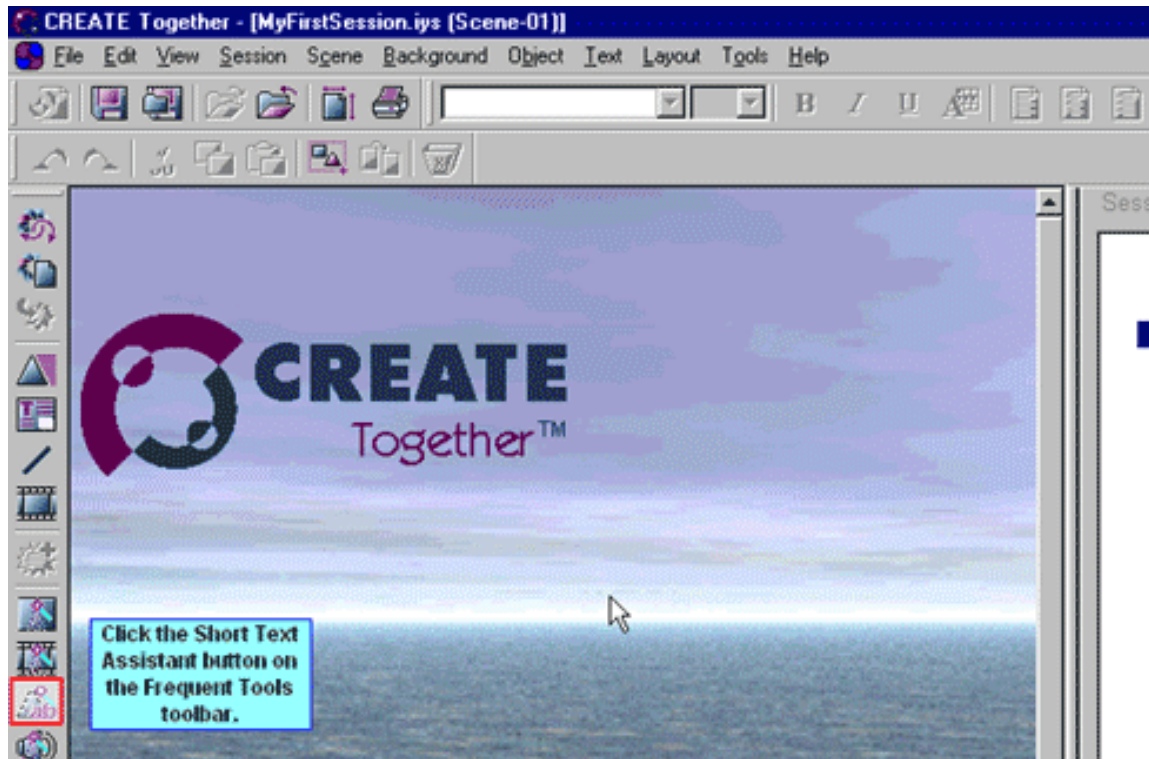


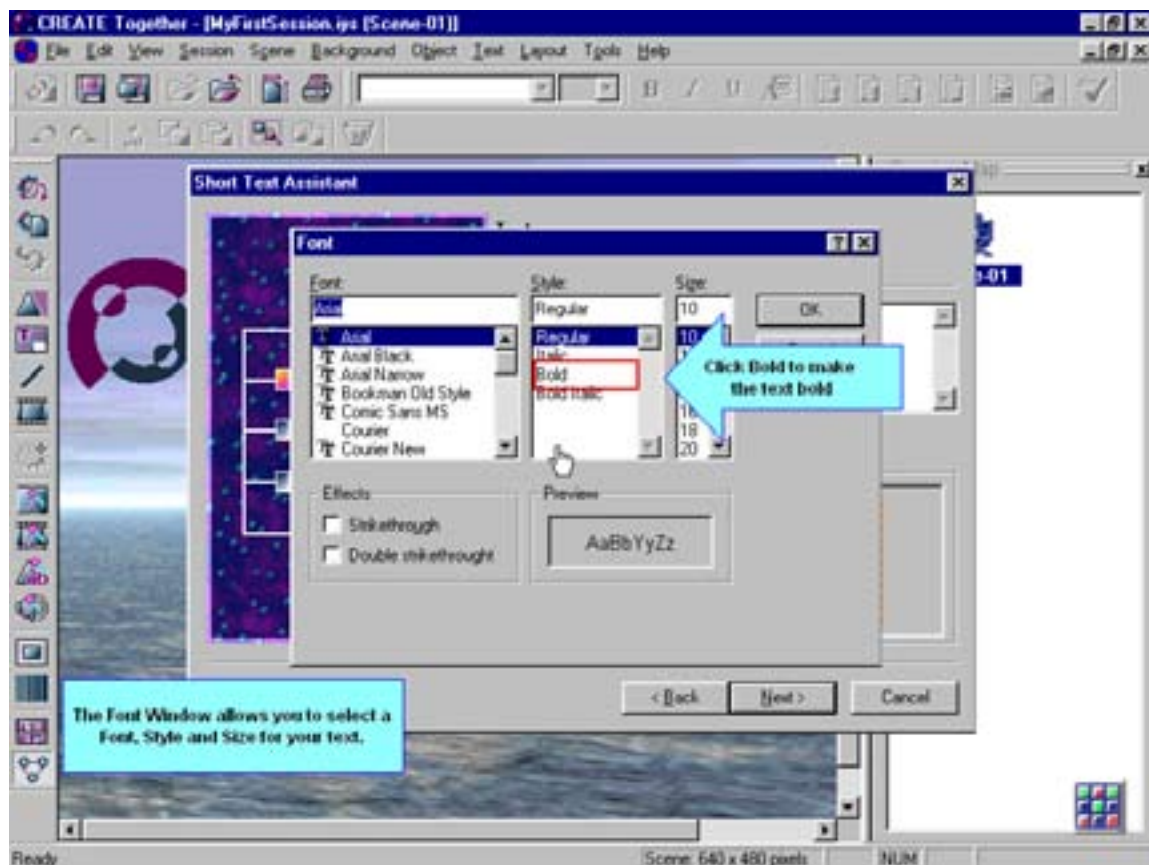
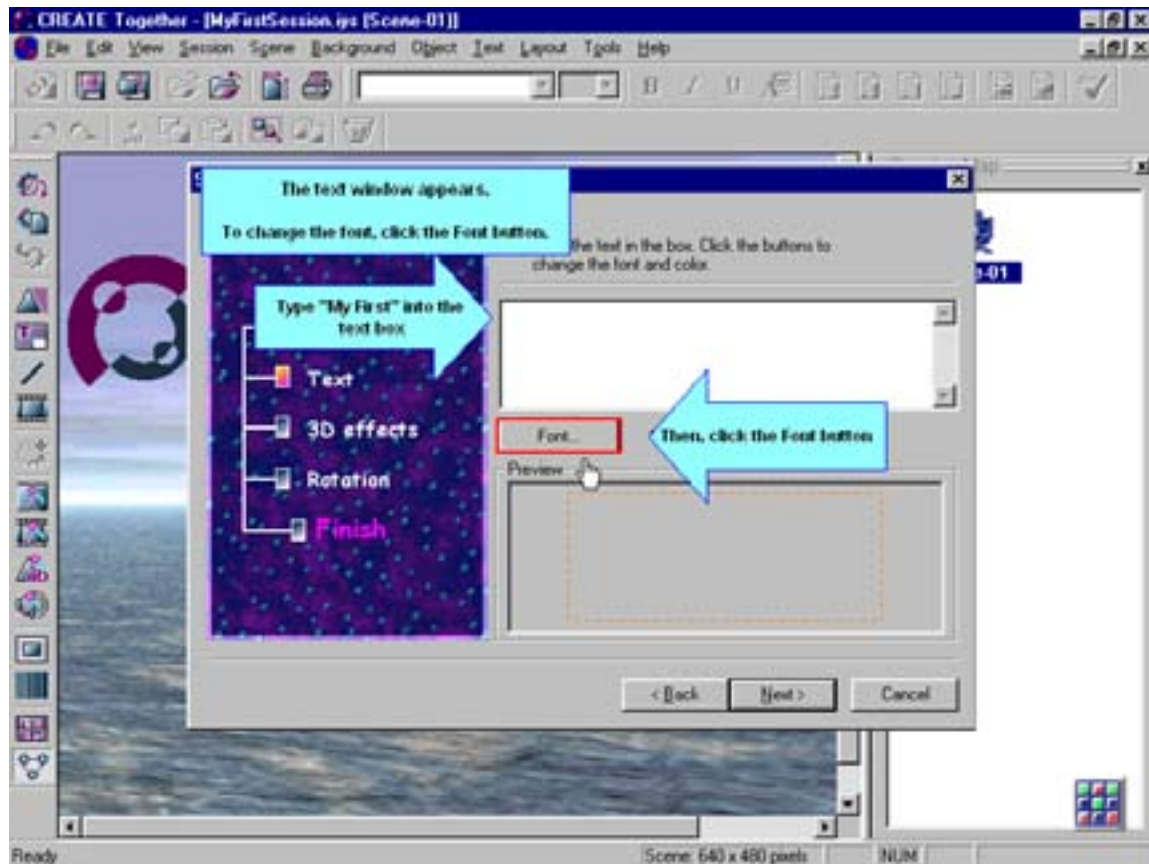
Lesson 4: Using Short Text Assistant

Like pictures, text is added to a scene by creating an object and adding a text caption. Text can be added to an existing object or displayed in a text box such as the one you are reading now.

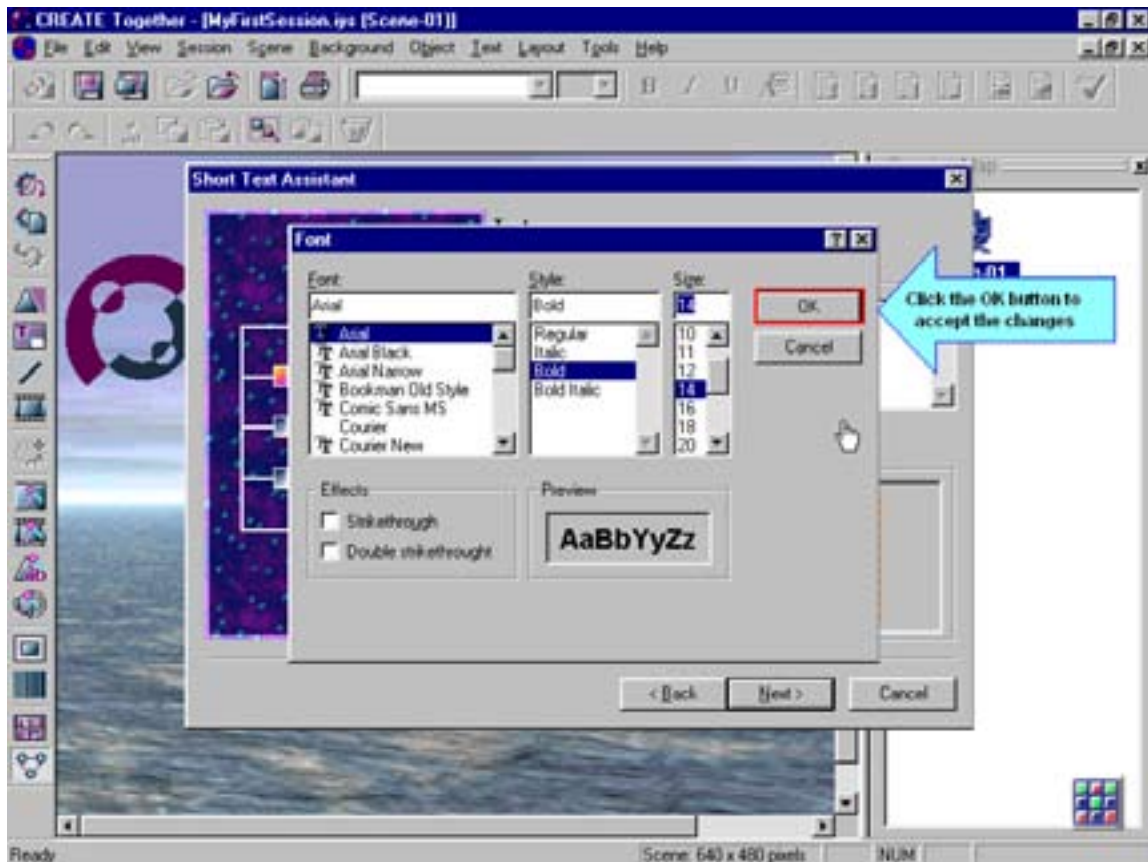
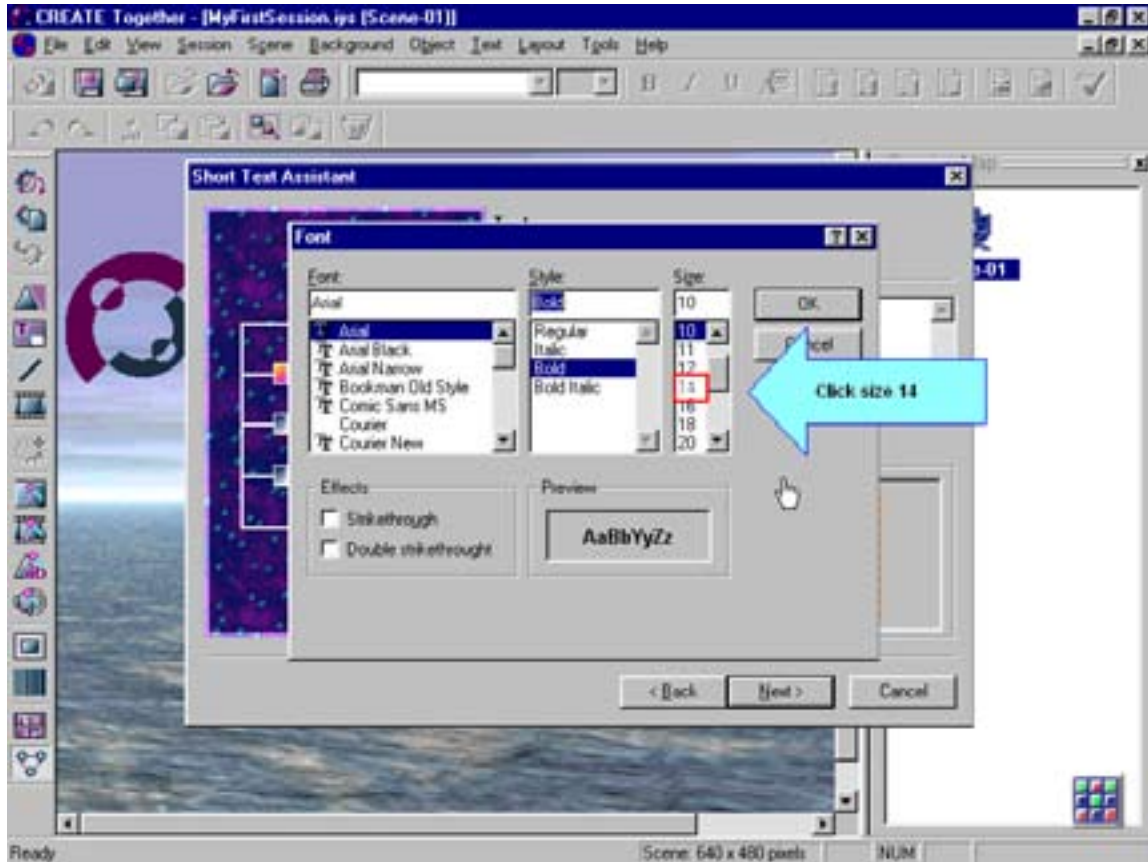
This lesson guides you through the process of using the Short Text Assistant to create an object with a caption. The next lesson discusses creating a text box.



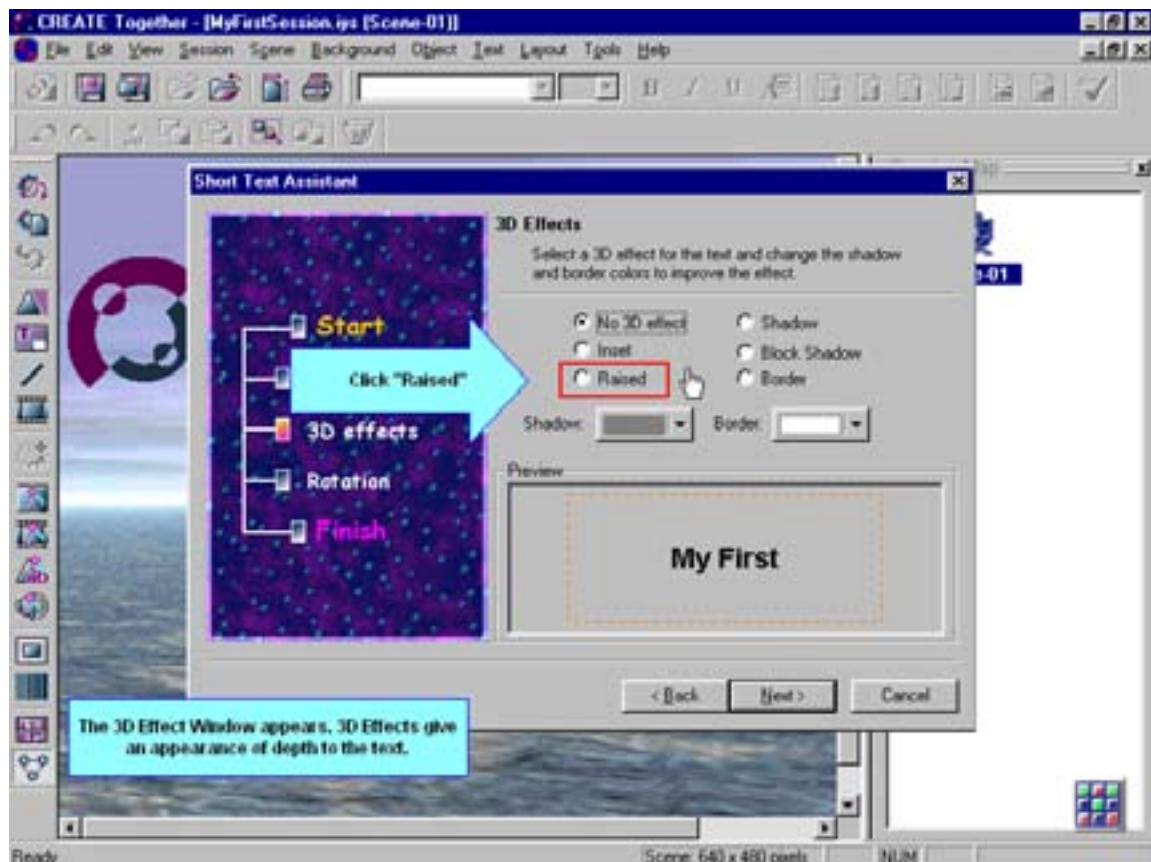
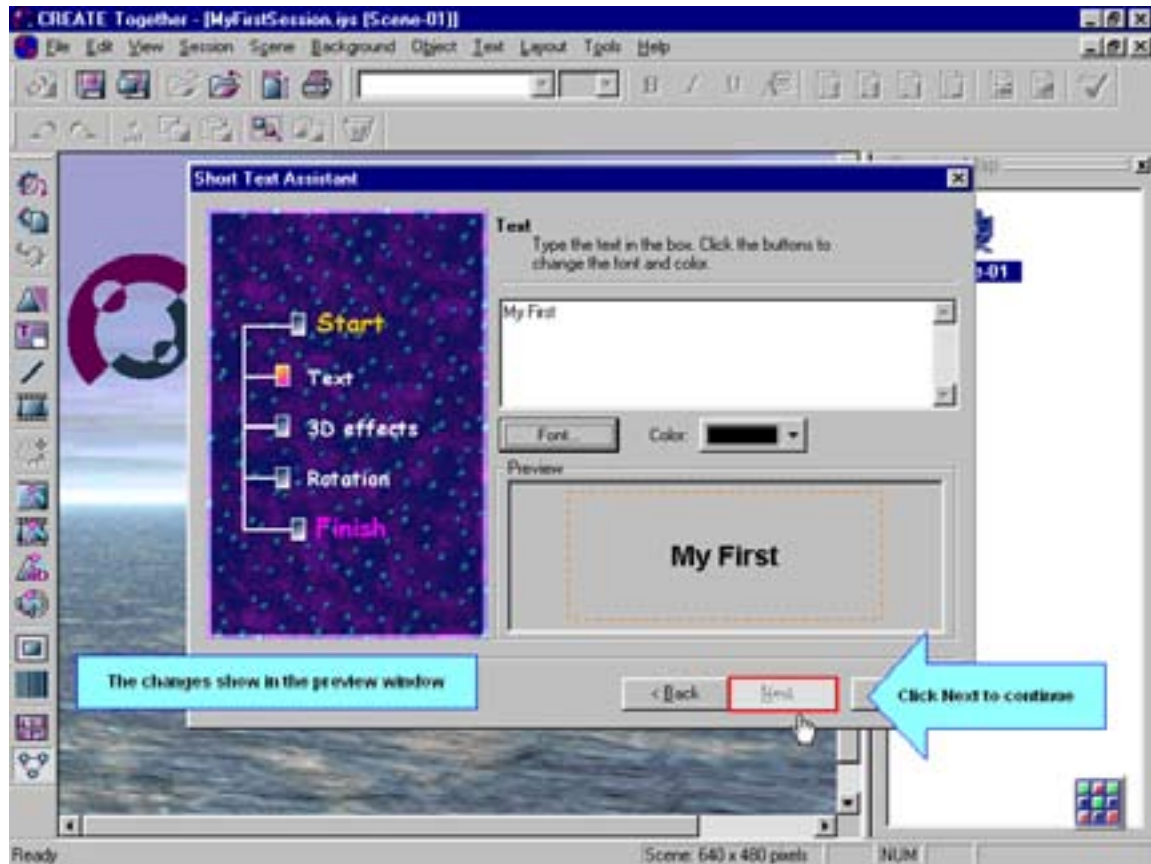
Lesson 4: Using Short Text Assistant



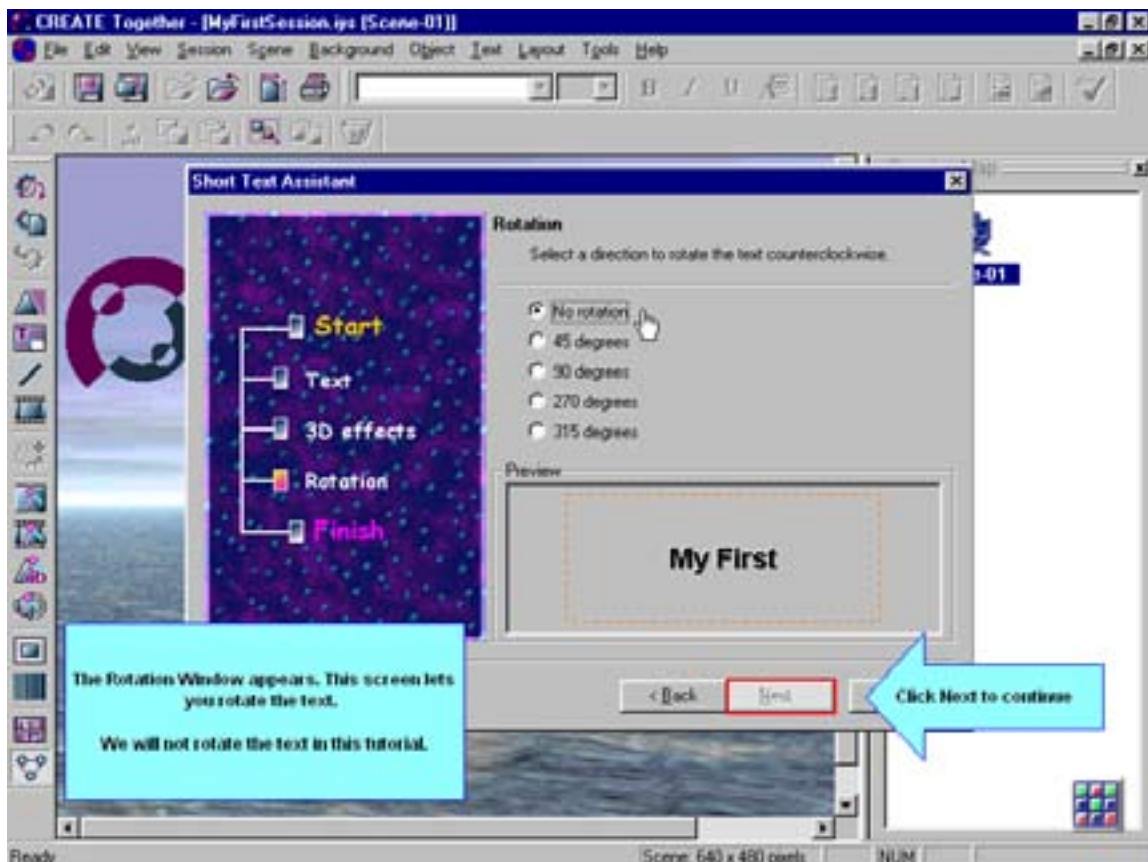
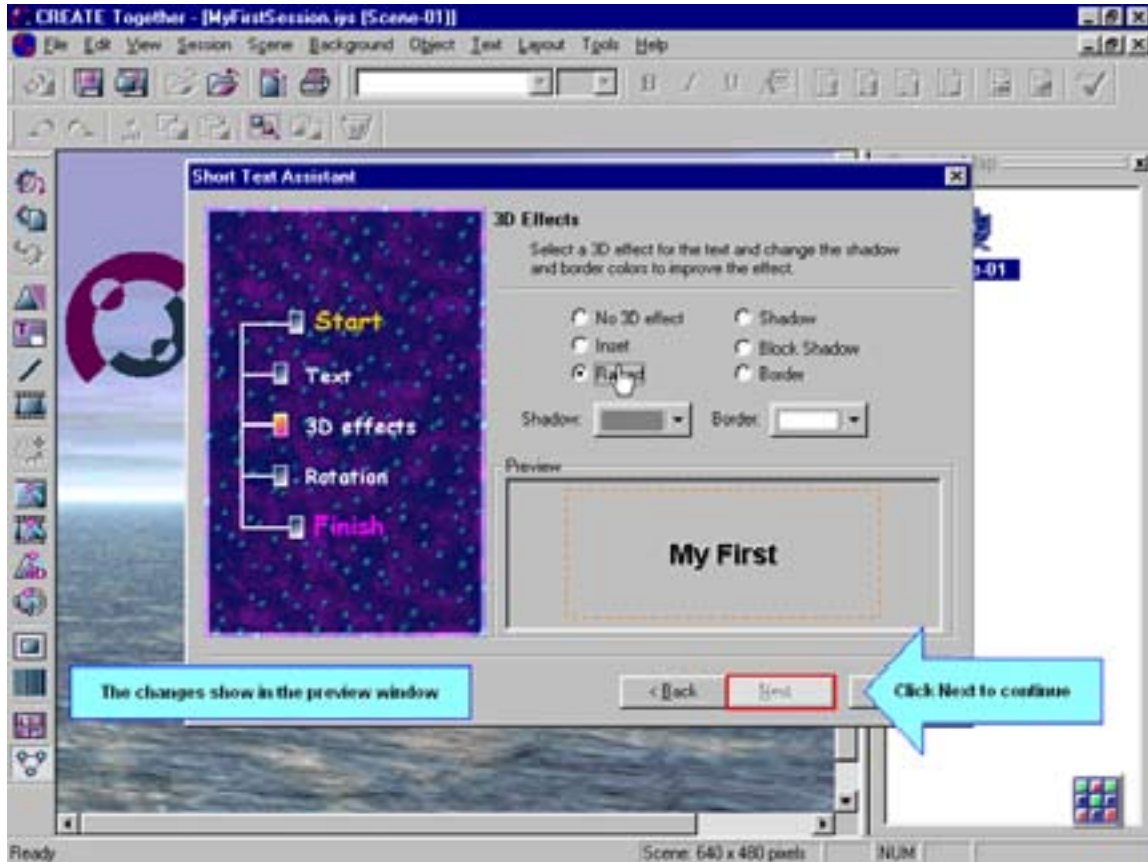
Lesson 4: Using Short Text Assistant



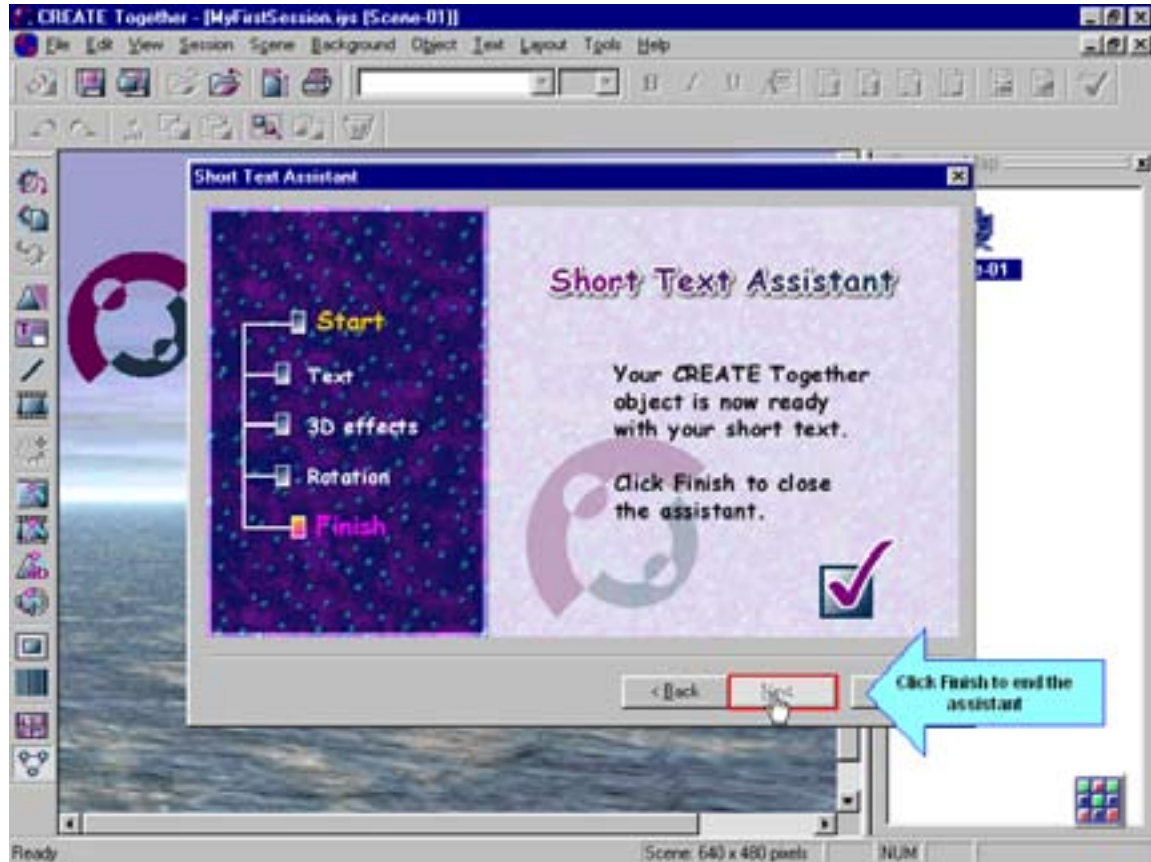
Lesson 4: Using Short Text Assistant



Lesson 4: Using Short Text Assistant



Lesson 4: Using Short Text Assistant



OK!

You have completed Lesson 4: Using the Short Text Assistant

Remember, a “short text” is a caption on a basic object with no image.

You will learn how to create a text box and input text in the next lesson.