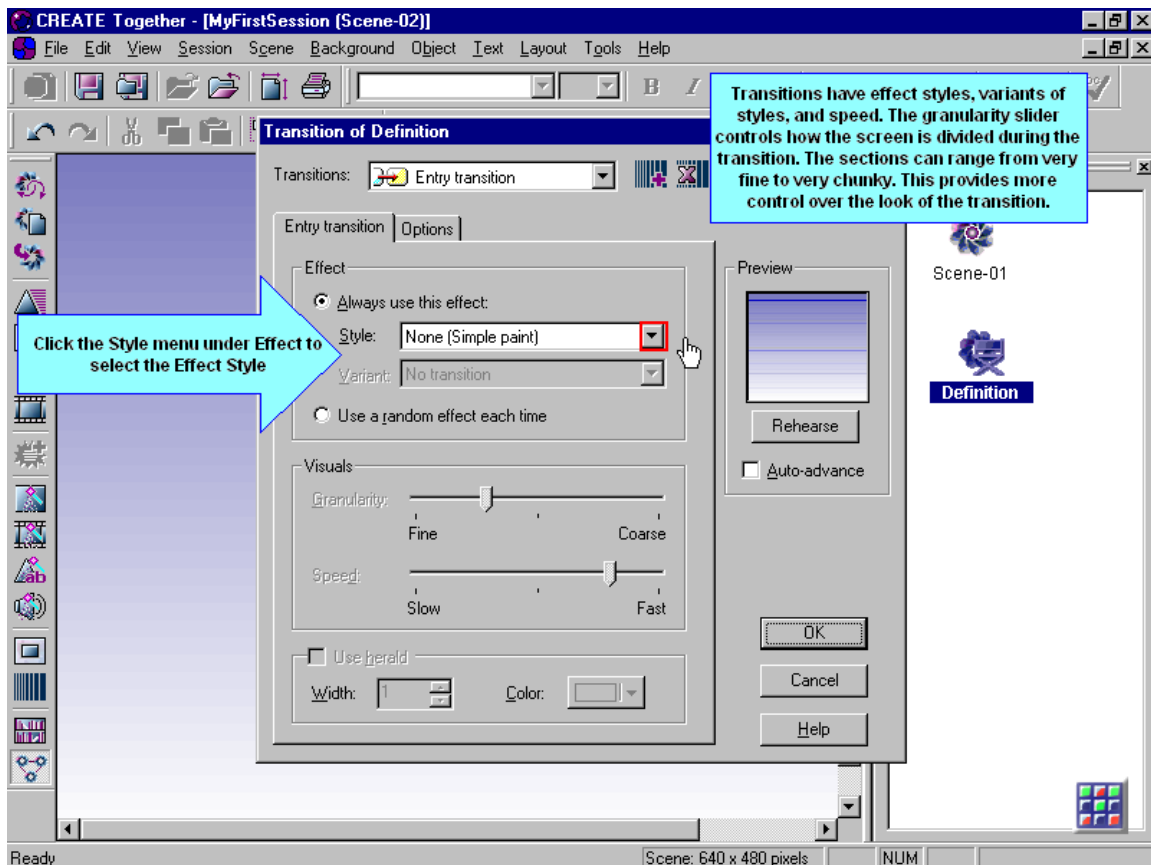
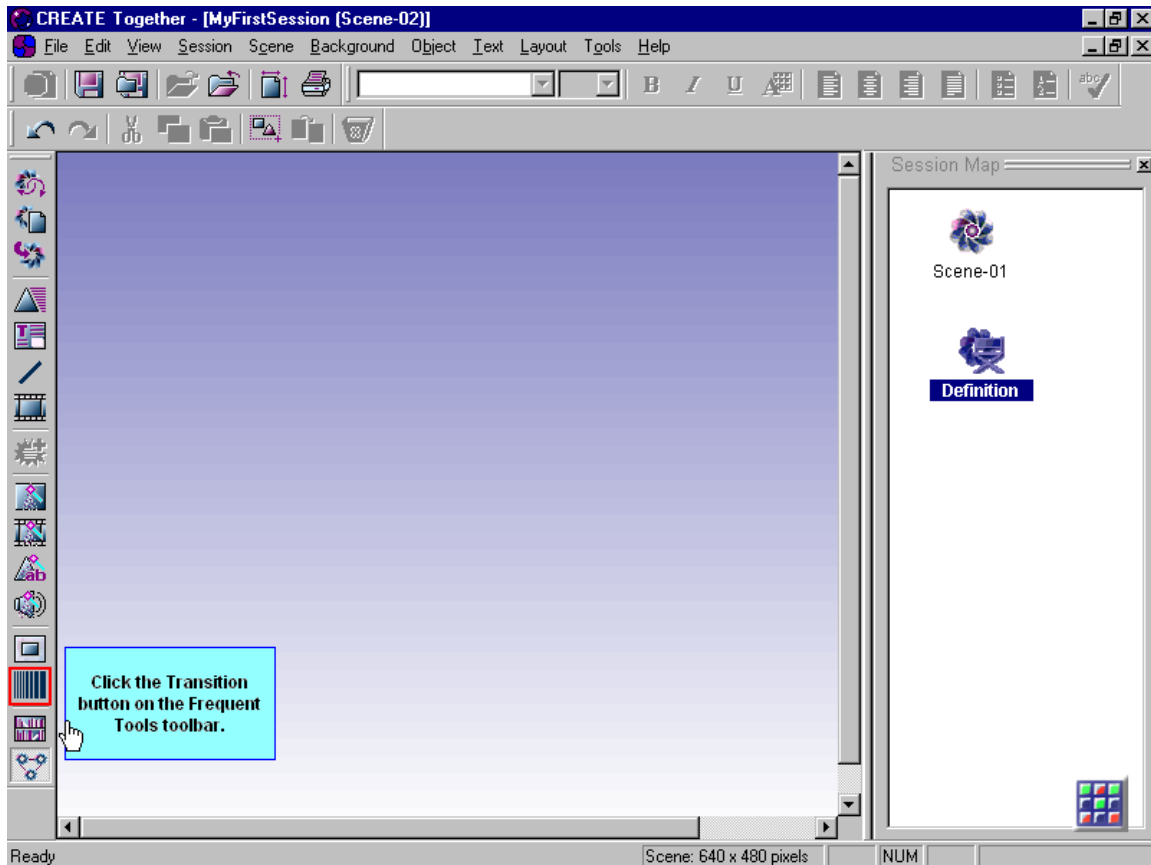
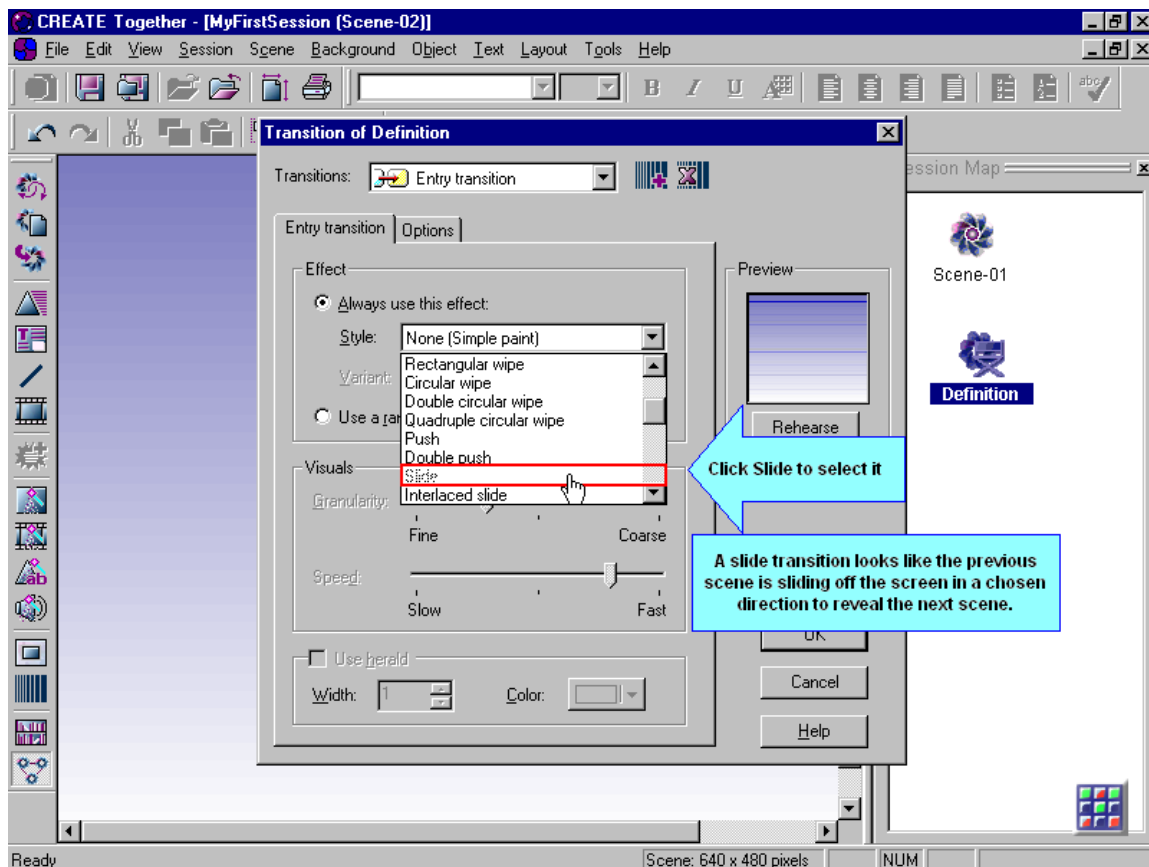
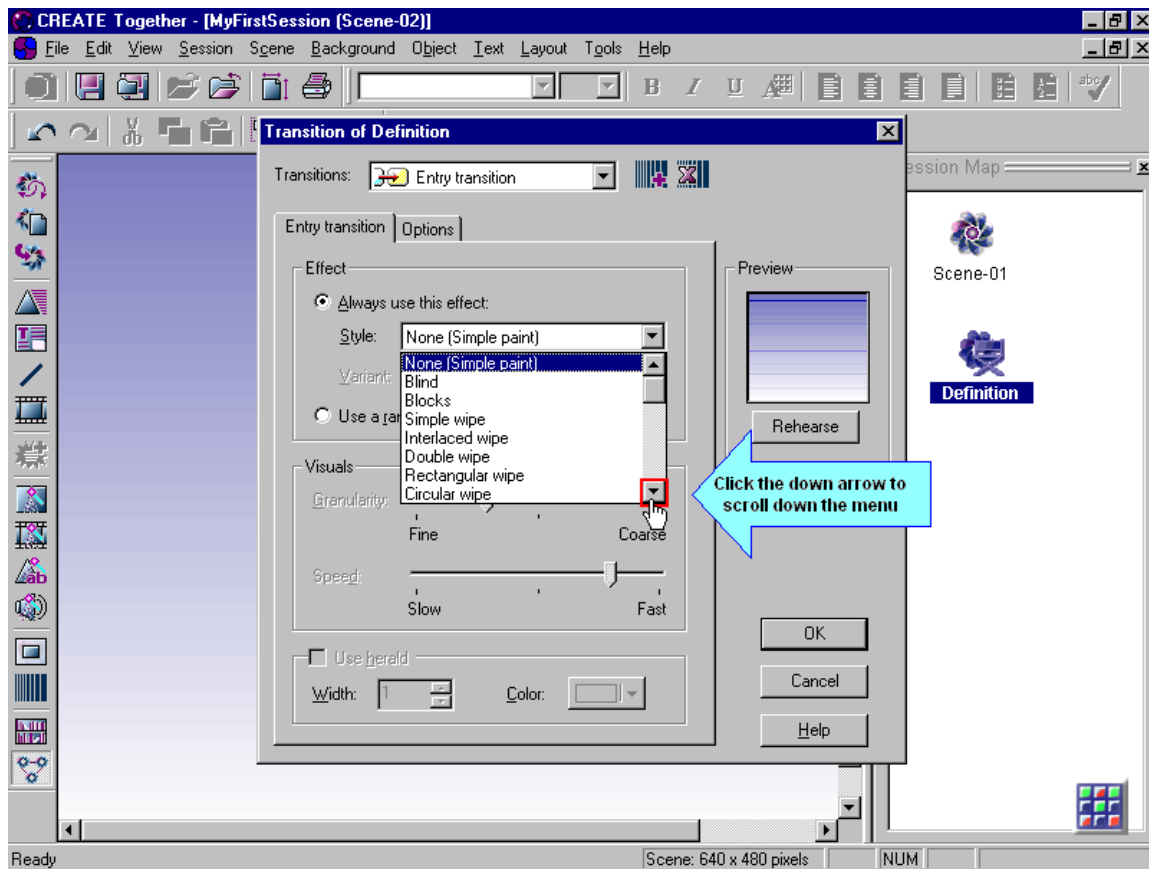


Lesson 11: Creating a Transition on a Scene

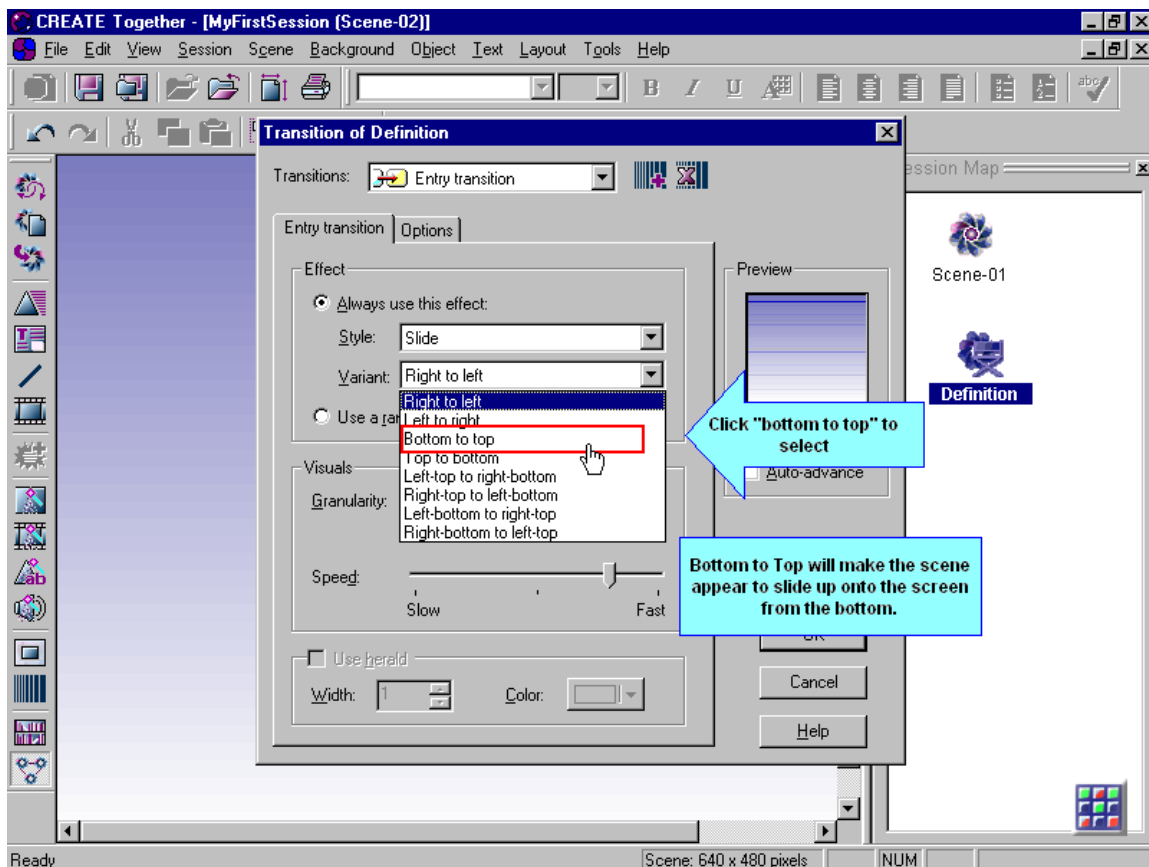
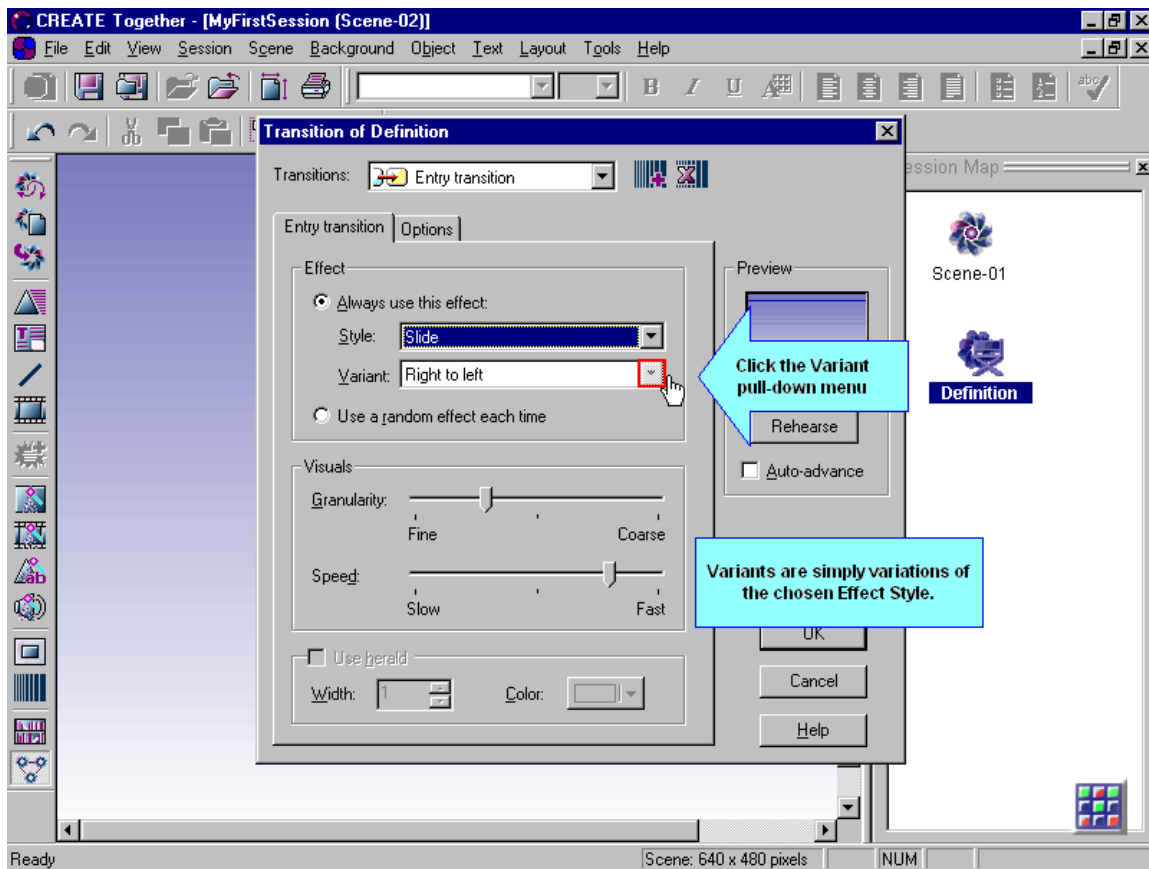
You can determine how one scene changes to another by selecting from a wide variety of transitions. The way a scene appears is controlled by an “entry” transition unless told otherwise in actions. This lesson guides you through setting the entry transition for the scene being produced.



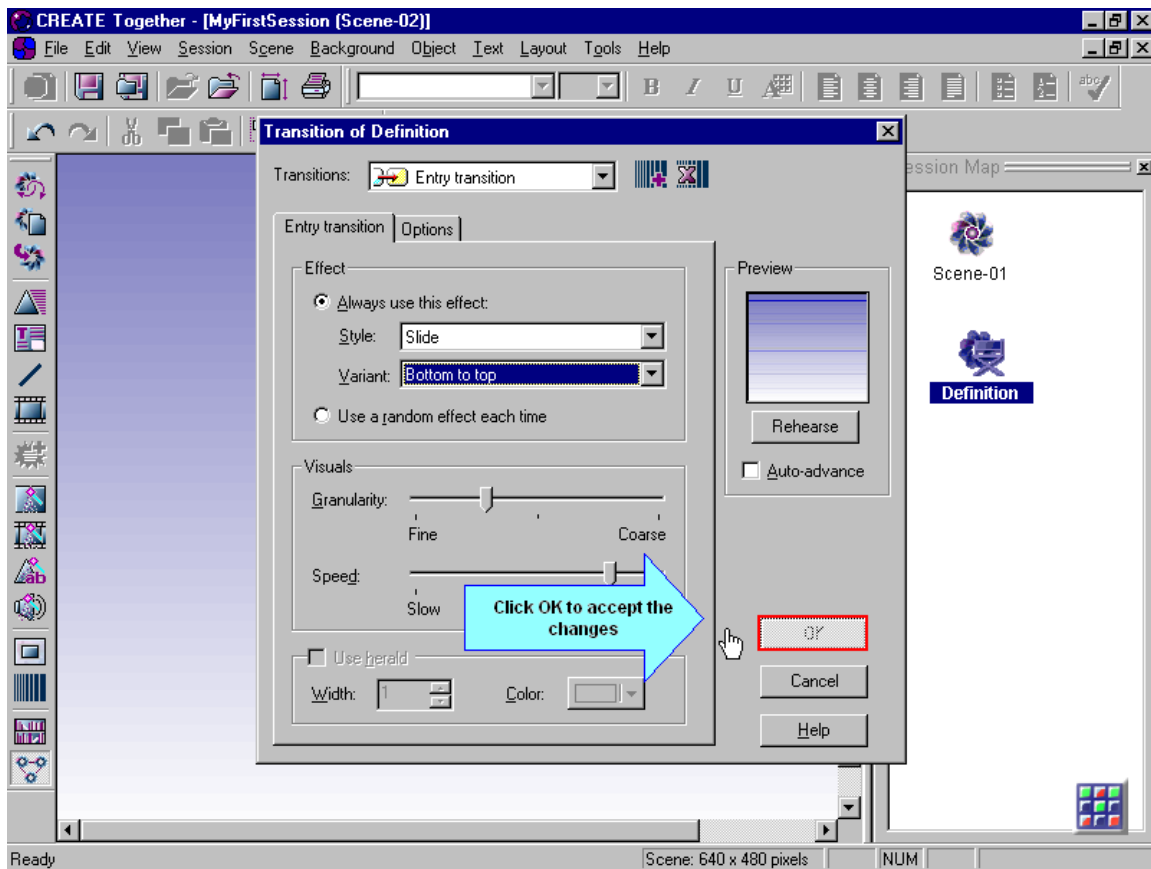
Lesson 11: Creating a Transition on a Scene



Lesson 11: Creating a Transition on a Scene



Lesson 11: Creating a Transition on a Scene



OK!

You have completed Lesson 11: Creating a Transition

Transitions can normally be previewed by rehearsing the scene or session or by clicking the rehearse button on the transition dialog.